



# Harmony Direct

Multi-standard DC charger  
for multiple EV types

Up to 240 kW DC Charging Station



# Power up your charging operations

Serving all types of vehicles and charging needs, our Harmony fast DC chargers guarantee smooth backend compatibility, an intuitive user experience, and simple integration with your existing business operations.



## Everything you might be asking for

- + Operable in extreme high temperatures without power derating
- + Charges up to 3 vehicles at a time
- + CCS2, CHAdeMO, GB/T, & 22 kW AC Type 2 outputs
- + >95% energy efficiency
- + Power configuration in 30 kW increments
- + Smooth payment and authentication
- + 7" touchscreen user interface
- + Intuitive user experience
- + Authentication methods: RFID, QR code, plug & charge, mobile app
- + OCPP 1.6J remote management
- + IP54 rating water resistant
- + Easy transportation and installation
- + Customizable corporate branding

# Why Harmony?



## Modern

Remote software updates and 1,000 VDC charging satisfy modern charging needs



## Modular

DC output ratings available from 30 – 240 kW and beyond for effortless expandability



## Flexible

Compatible with multiple output connectors: CHAdeMO, CCS, and Type-2 AC (GBT optional)

## Service Support

### Annual Maintenance Contracts

Exicom Power Systems builds on its unique expertise in power conversion and control product development to propose a full service offering for all stages of product life.

Secure

Fast

24/7

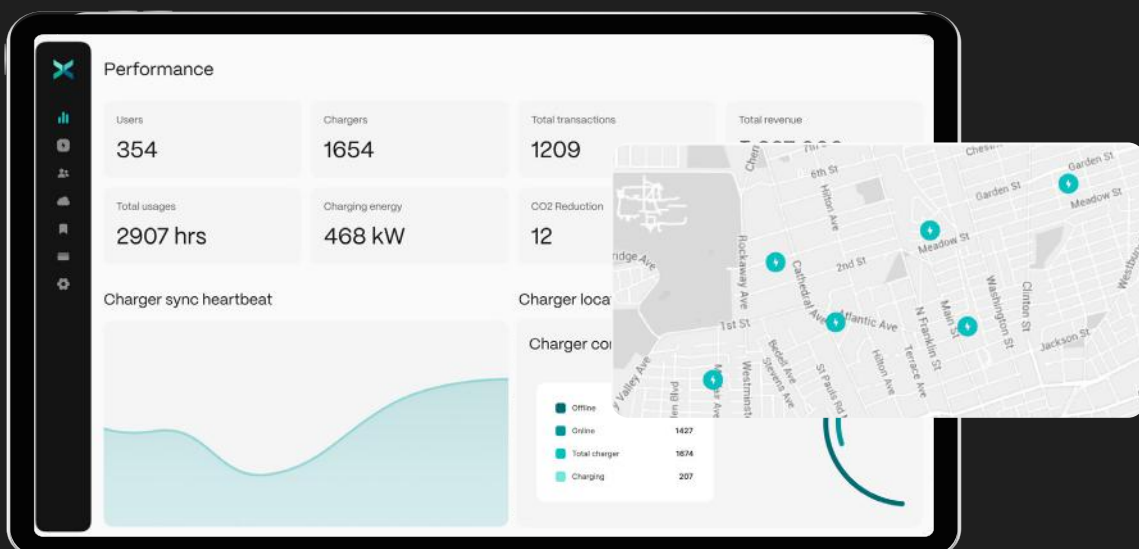
Customized

Reliable

## ChargeX

### Charger Management made effortlessly easy

ChargeX is a smart cloud-based charger management platform for anyone who has a charger, and wants to deploy, manage and grow their EV charging network.



## The trusted EV charging solution provider for industry leaders

### Fleets

Fleet vehicles only earn you money while they're on the road. We help ensure your vehicles are charged and ready for work whenever and wherever they're needed.

### Workplace

Exercise your commitment to sustainable transportation and facilitate company-wide emission reduction by providing convenient workplace charging options.

### Charge Point Operators

End-to-end management and control over the charging process and experience. Pair your chargers with ChargeX or integrate with another charger management system of your choice.

### Retail & Hospitality

Reliable charging solutions that are easy to install, maintain, and scale, so you can appeal to EV-driving patrons with convenient on-site charging options.

### Heavy duty vehicles

Big loads need powerful charging. Our industrial charging solutions ensure your heavy duty fleet is charged and ready to run at full capacity.

## The trusted EV charging solution provider for industry leaders



# Specifications



---

## Power Output

**DC Output Voltage Rating:** 200 – 1,000 Vdc  
**Outlet 1:** CCS-2 125 A or 200 A, GB/T 125 A or 200 A  
**Outlet 2 (optional):** CCS-2 125 A or 200 A, GB/T 125 A or 200 A, CHAdeMO 125 A  
**Outlet 3 (optional):** AC Type-2 22 kW  
**DC Power Class:** FC60 kW, UFC120 kW, UFC180 kW, UFC240 kW  
**Simultaneous EV charging qty.:** up to 3

---

## Mains Input

**Input Voltage (nominal):** 380/400/415 Vac  
**Input Voltage Range:** 320 Vac – 520 Vac  
**Network Connection:** TN-S  
**AC Wiring:** 3-Phase (L1, L2, L3), N, PE  
**Input Frequency (nominal):** 50 / 60 Hz  
**Input Frequency Range:** 45 – 65 Hz  
**Leakage Current:** < 10 mA  
**Conversion Efficiency:** ≥ 95% (peak)  
**THD(i):** 5 %  
**Power Factor:** > 0.98  
**Inrush Current (Instant Impulse Current):** < 100 A  
**Short Circuit Current Rating:** 25 kA  
**Standby Power @ nom. voltage:** 110 – 180 W

---

## Mechanical

**Ingress Protection:** IP 54 acc. IEC 60529  
**Impact Resistance:** IK10 acc. IEC 62262  
**Dimension (H\*W\*D):** 1,850 \* 650 \* 510 mm (60-142kW)  
1,850 \* 720 \* 639 mm (180kW)  
1,850 \* 805 \* 751 mm (240kW)  
**Weight:** 170-422kg  
**Charging Cable Length:** 5 meters, 7 meters optional  
**Cable Storage:** Support hooks  
**Material:** Texture Finish Powder Coating SECC  
**Mounting:** Free Standing (may be bolted to floor)  
**Cooling:** Forced Air (variable speed)

# Specifications



---

Configuration	<p>Software update: OTA (Over The Air)</p> <p>Control and Set up: OCPP v1.6j, local (passcode controlled)</p>
Environmental	<p>Operating Temperature: -30 °C to 75 °C (linear de-rating above 55 °C)</p> <p>Storage Temperature: -40 °C to 80 °C</p> <p>Altitude: 2,000 meters (de-rating above 2,000 meters)</p> <p>Humidity (Non-Condensing): 5 % to 95 %</p>
Standards / Certification	<p>Safety: IEC 61851-1;</p> <p>IEC 61851-21-2; IEC 61851-23; IEC 61851-24; IEC 62196-1; IEC 62196-2; IEC 62196-3; IEC 61000</p> <p>Other: ARAI (AIS 138 Part 2)</p>
Quality	<p>Mean Time Between Failure: &gt;150,000 hours</p> <p>Mean Time To Repair: &lt;1 hour on arrival at site</p> <p>Design Life: 10 years*</p> <p>Warranty: 2 years* (standard). Extension available</p>
Protection and Safety	<p>Surge Protection: Integrated – IEC 61000-4-5</p> <p>Over Current: DC output: 101A @ 300V per 30 kW module</p> <p>Under Voltage: AC Input: &lt; 280 Vac phase to phase</p> <p>Over Voltage: AC Input: &gt; 530 Vac phase to phase</p> <p>Over Temperature: Auto de-rated above 55 °C ambient</p> <p>Residual Current (Leakage): &lt; 100 mA</p> <p>Over Voltage Category: III</p>
User Interface and Comms	<p>Display: Integrated – 7" TFT LCD touch screen</p> <p>Support Language: English</p> <p>Emergency Switch: Available (red mushroom push button)</p> <p>Charge Option / User Authentication: RFID, mobile app, OTP, QR Code</p> <p>Energy Metering: DC included (MID optional)</p> <p>Visual Indication (LED): Presence of Supply, State of Charging, Error</p> <p>RFID: MIFARE – ISO/IEC 14443A/B</p> <p>Connectivity: Internet access via Ethernet (RJ45)</p> <p>Modem (option): 4G LTE (EU)</p>

---

\* Terms and Conditions apply

THIS DOCUMENT CONTAINS INFORMATION THAT IS SUBJECT TO CHANGE WITHOUT NOTICE.

No part of this publication may be reproduced or transmitted in any form or by any means, electronic or mechanical, including, but not limited to, copying, recording, retrieving data, or computer networks without the written permission of Exicom.

Exicom and all other Exicom product names and slogans are trademarks or registered trademarks of Exicom. Exicom products can be protected by one or more patents.

All other products and services mentioned may be trademarks or service marks of their respective owners.

Illustrations of the product and user interface are exemplary and may differ from the actual appearance.

October 2022 – Version 1

© 2022 by Exicom. All rights reserved



Scan for  
Digital Brochure



EV chargers for homes  
and businesses

Exicom is distributed and maintained by a network of qualified partners and resellers. Find more information and your local partner at:

[exicom-ps.com](http://exicom-ps.com)