



U SHAPED BAFFLE LOUVERS

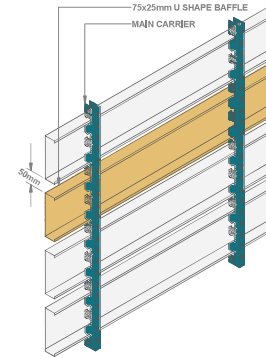
Baffle Louvers don't just allow natural ventilation and exhaust, they define the architectural look of the room and the exteriors significantly. The parallel and horizontal arrangement of the baffle louver's panels can be symmetric or designed candidly, to enhance the visual playground while maintaining the benefits and functionality that come with it.

Our baffle louvers are available in a variety of shapes, sizes, colours and finishes. They are made of finest quality materials and ensure durability!

APPLICATION: Conventions centres, Stations, Commercial Facades, Service Ducts etc.



SYSTEM OVERVIEW U SHAPED BAFFLE LOUVERS



Environmental Sustainability



Painted Item Durability



Corrosion Resistance



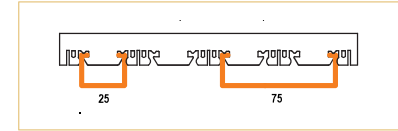
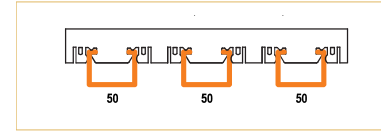
Antimicrobial Properties



Easy Cleaning



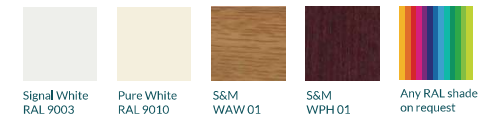
Wind Resistant



PRODUCT SPECIFICATION TABLE

HEIGHT	WIDTH	GAP
25	25	25
75	25	50
100	50	50
ANY CUSTOM SIZE ON REQUEST		

PANEL FINISHES



*Due to printing limitations, shades may vary from actual product.





V SHAPED BAFFLE LOUVERS

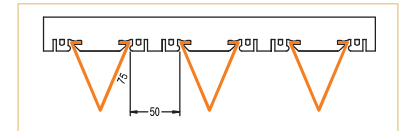
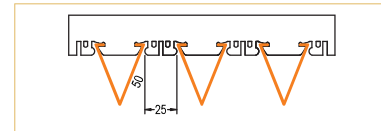
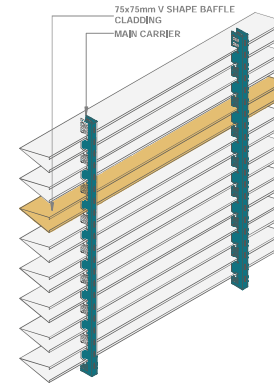
V-Shaped louvre is a great choice to accentuate the vivacity of your space while keeping a simple, minimal approach. The V-shaped baffle cladding is an amazing way to improve the acoustics of your space and add a flair of sophisticated elegance to the exteriors.

Envision a unique architectural style for the exteriors of any space with our V-shaped Baffle Cladding systems.

APPLICATION: Facades, Fins, Commercial And Industrial Ducts, etc.



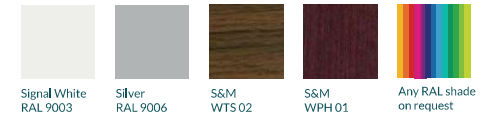
SYSTEM OVERVIEW V SHAPED BAFFLES LOUVERS



PRODUCT SPECIFICATION TABLE

SIZE		GAP
50	50	25
75	75	50

PANEL FINISHES



*Due to printing limitations, shades may vary from actual product.

